

Site

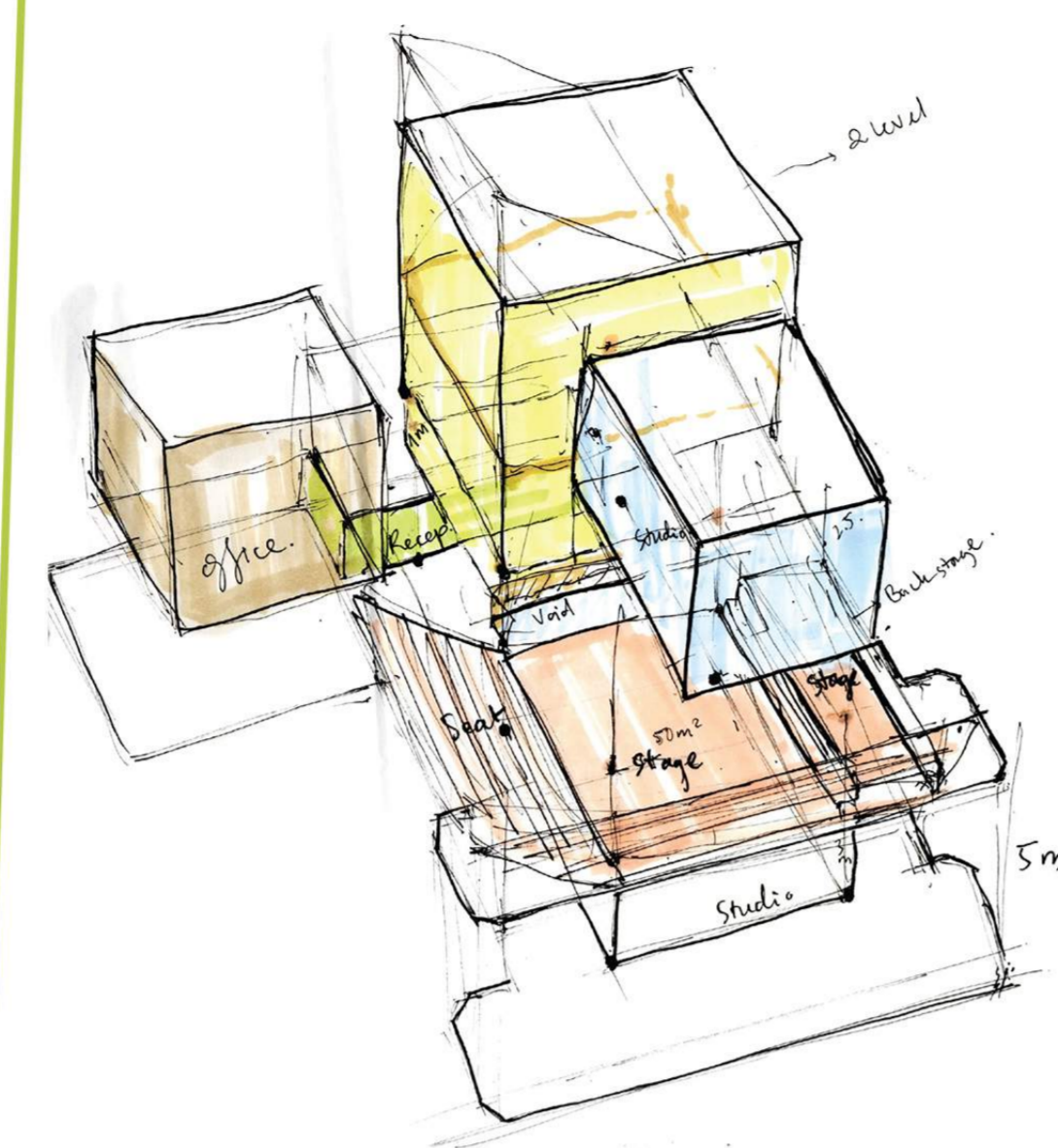
The project is located at an old church in Priory Place, Byker, Newcastle upon Tyne. Throughout the history, Byker is famous for a proud and tight community of ordinary people. The church stands out from the residential houses behind the historic Byker Wall.

YOUTH Theatre

Dance & Act Community for Youth

YOUtheatre is a non-profit theatre which takes youth as the centre of development. This project believes that performing arts, namely dance and act, enable youth to find confidence in themselves, give them a platform to express who they are, and communicate with other generations. Thus, it tightens the community by making youth take responsibility as a creative generation who take care of their social issues.

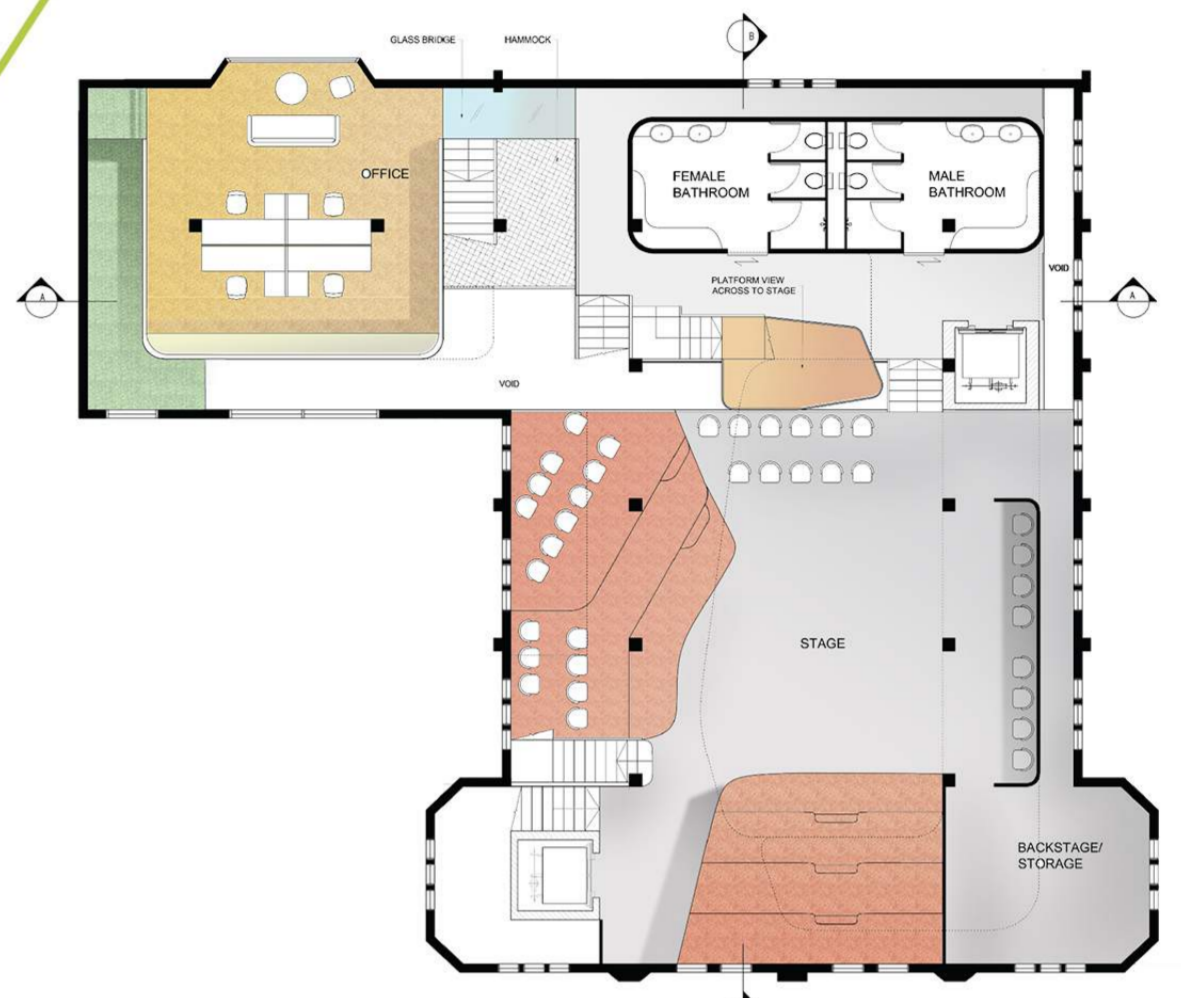
The client is Newcastle Gateshead Cultural Venues (NGCV) who are the collaboration of various cultural producers. Target customers are 13-19 teenagers, who can join the program after school, weekend and holidays. They can have the chance to contribute to script writing, create their own play, and perform to specific audience. The rest of the time, YOUtheatre still opens for other age groups to rent the space.



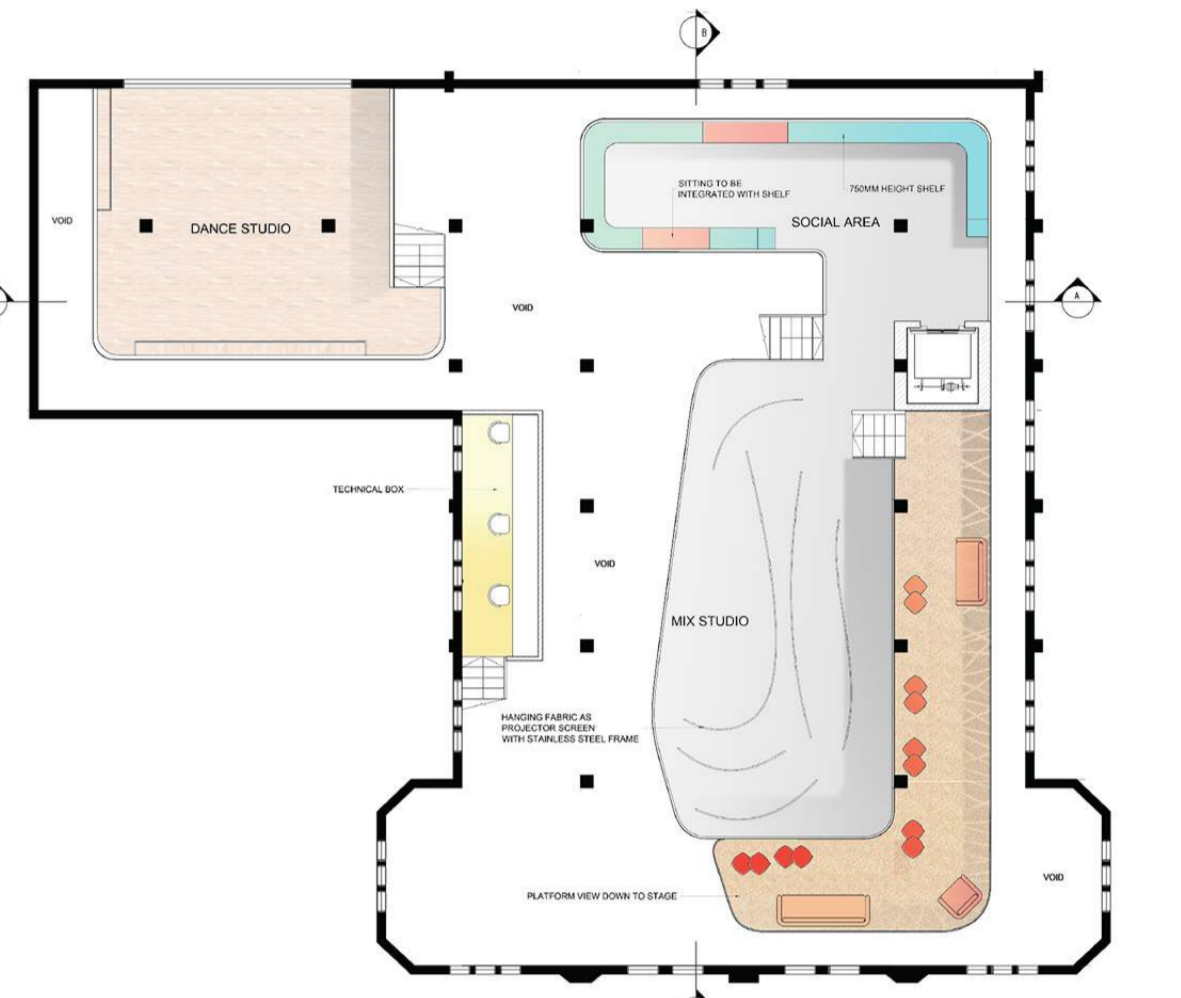
Concept: Part of the Whole

Individual Uniqueness Community Connection

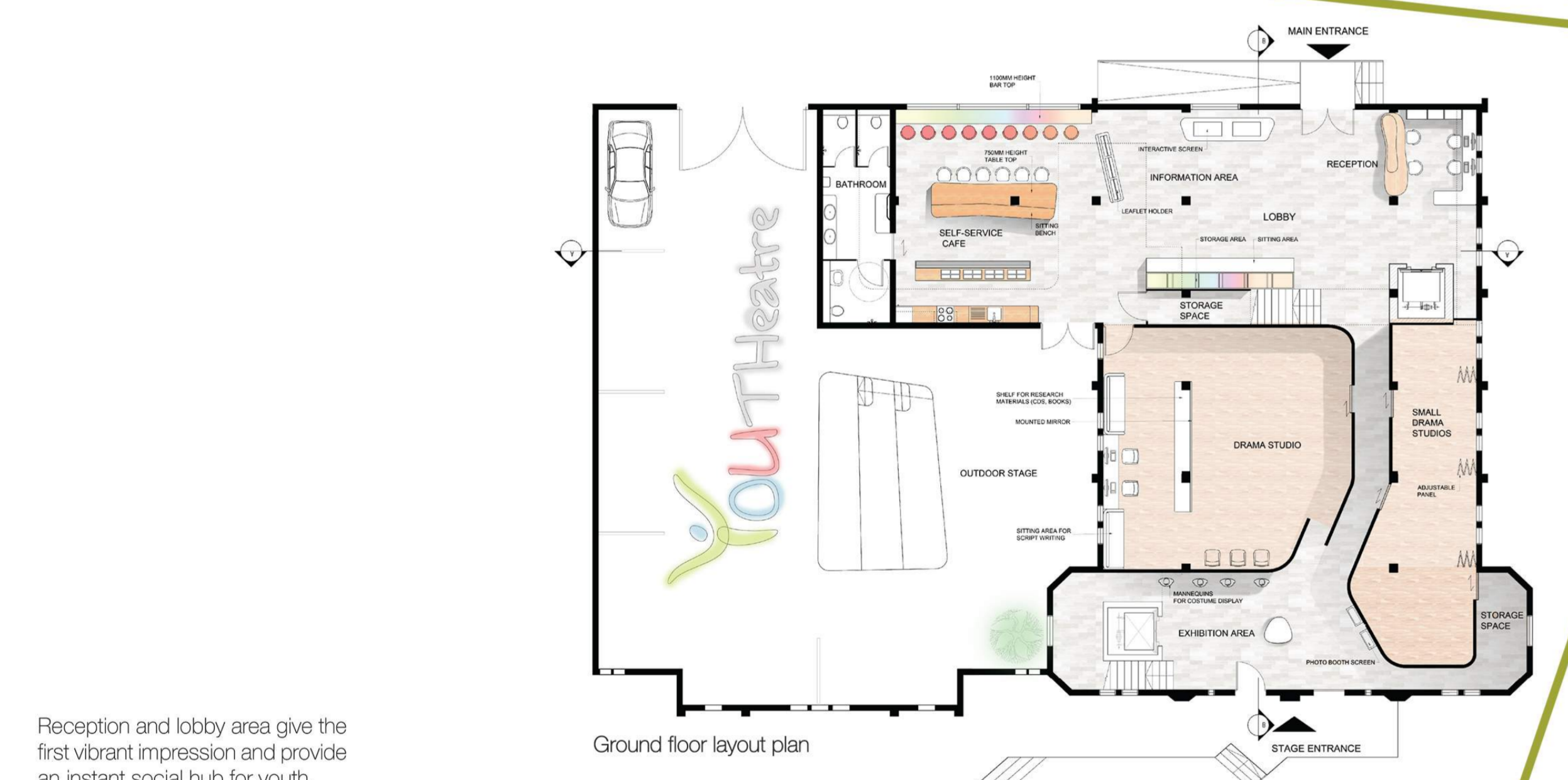
Each Youth is a unique individual, however, only when they are united with the community that they can serve the valuable meaning of their social role. Nowadays, youth has been detached from community for many reasons, and this theatre is a place to pull them back to the community. The design concept - Part of the Whole - describes how individual components break apart to move in their own directions, and how the significant tension can tighten them together to form the whole connected structure.



First floor layout plan



Second floor layout plan



Reception and lobby area give the first vibrant impression and provide an instant social hub for youth.

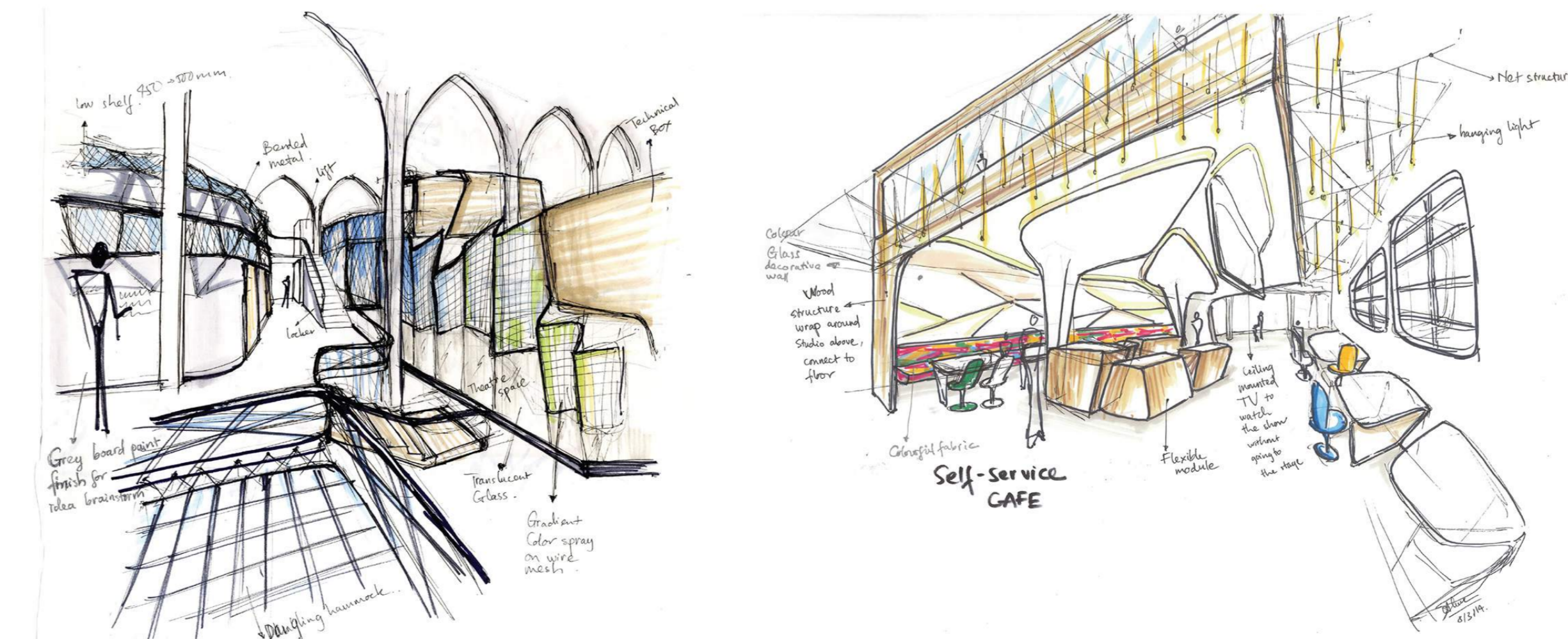


Reception & Lobby



Office and social area

The whole theatre space and stage area are designed with various type of flexible sitting and open view to encourage the interaction between people.



Corridor view to stage



Stage